



COMPANY OVERVIEW

Buffalo Computer Graphics, Inc.

Capabilities Briefing



Our Mission: To engineer superior products and offer outstanding service tailored to our customer's needs.



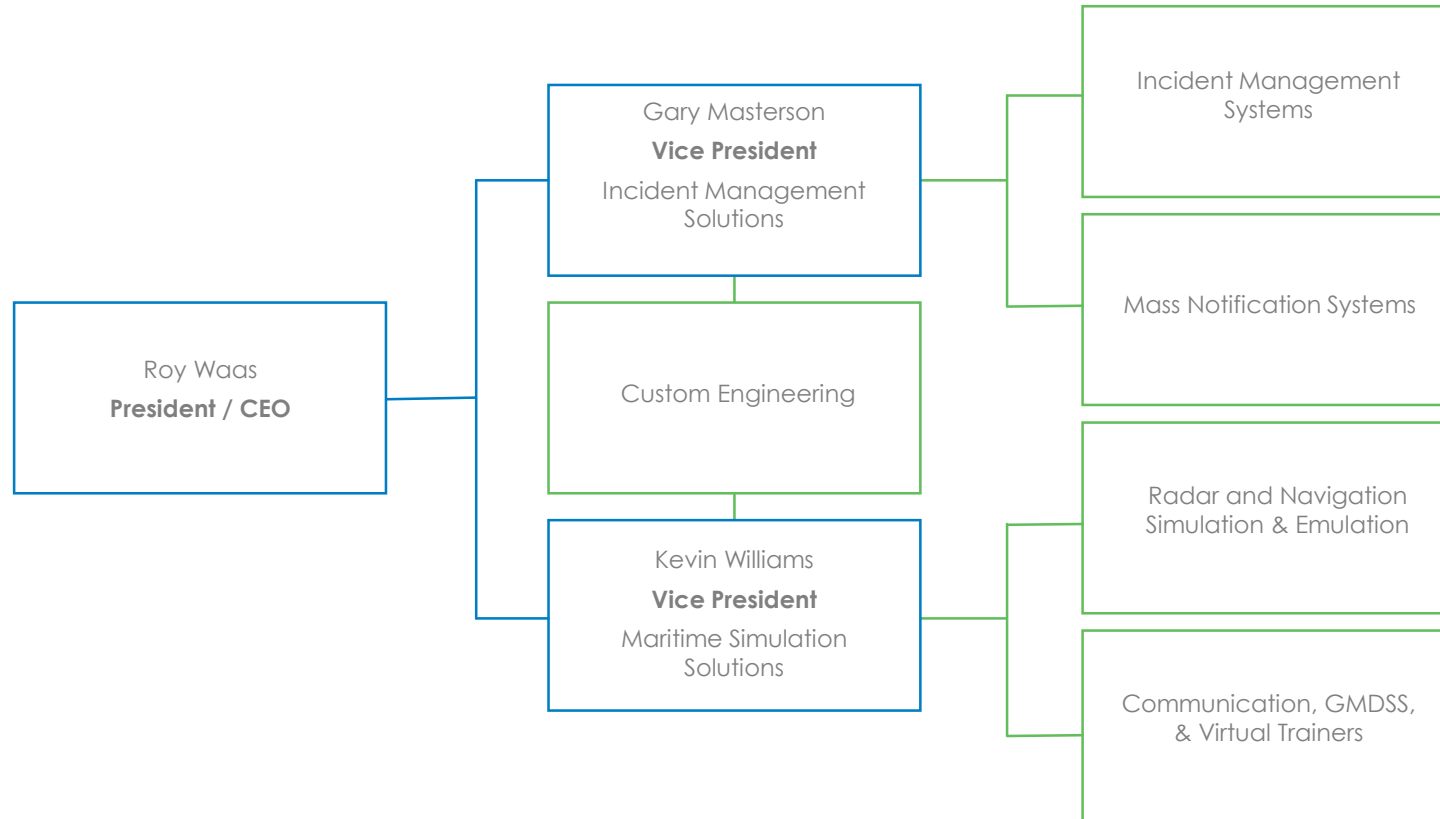
CORPORATE INFORMATION

As a premier provider of Incident Management Software and Maritime Simulation Solutions, BCG has earned a reputation for providing superior products and excellent service to both our private sector and government customers.



- Founded in 1982
- Privately held, veteran owned small business
- Headquartered in Blasdell, NY with a satellite office near Albany, NY
- Sales teams in the US and Canada

CORPORATE ORGANIZATION



BCG CAPABILITIES



- Virtualization of devices or systems for operator training
- Web, mobile, and desktop application development
- System engineering and software testing
- Software engineering in multiple languages and platforms
- GIS services and applications (ESRI Business Partner)
- Custom computer hardware engineering:
 - Digital and analog design
 - Programmable logic (FPGA)
 - Micro-processor & embedded PC
- Microsoft Partner (Silver application development)
- Implementation Services including Project Management & Training

IMPORTANT IDENTIFICATION NUMBERS

CAGE Code: 0AK34

DUNS: 106807480

GSA Contract for DLAN Systems: GS-35F-531BA

NAICS codes: 333318, 423430, 511210, 541511, 541512, 541519, 611420, and 624430

NYS OGS IT Umbrella: PM67382





BUSINESS AREAS

PRIMARY BUSINESS AREAS



Maritime
Simulation
Solutions



Incident
Management
Systems

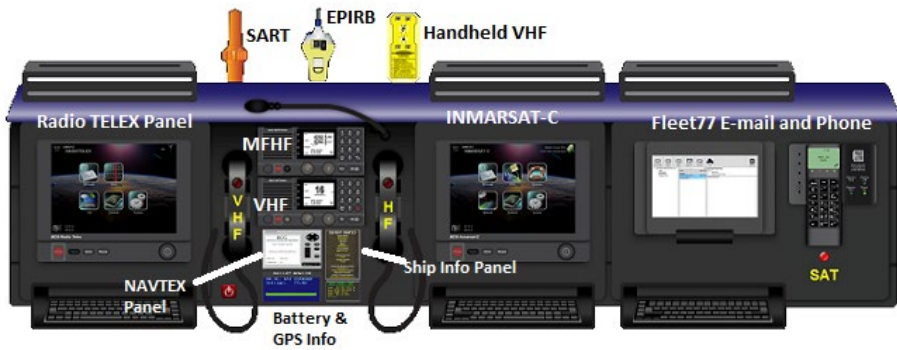


Mass
Notification



Custom
Engineering

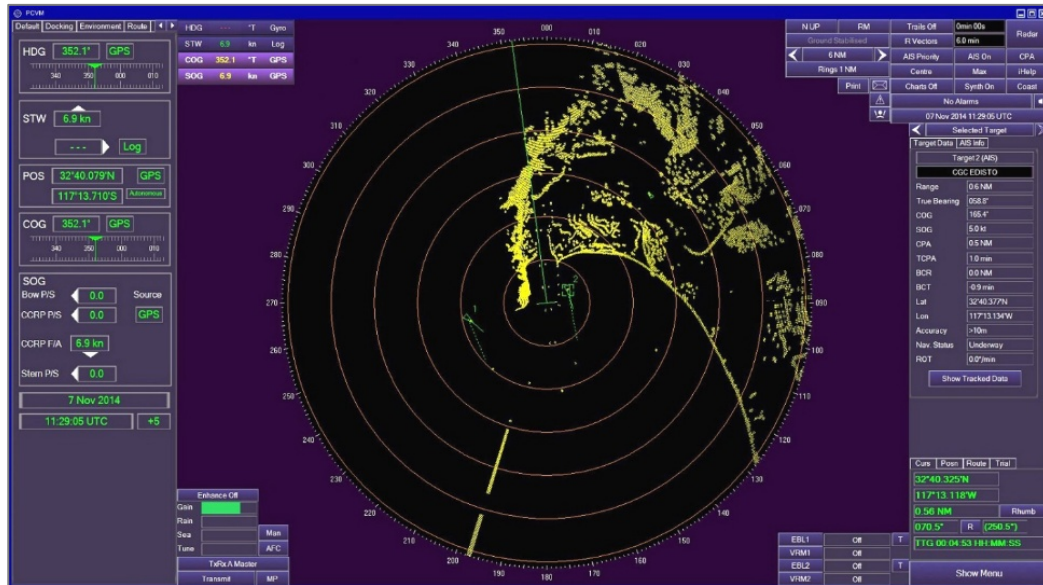
MARITIME SIMULATION: COMMUNICATION SIMULATION



- Global Maritime Distress and Safety System (GMDSS) simulator
- Hardware or software VoIP communication simulation
- Virtual panel trainers



MARITIME SIMULATION: RADAR SIMULATION



- Radar 'stimulator' hardware and software options
- ARPA / radar emulations
- ECDIS and ECD stimulation
- Student ownership controls

INCIDENT MANAGEMENT SOLUTIONS

The screenshot displays the DisasterLAN County Level Status Board interface. The top navigation bar includes 'DisasterLAN ELAN Reporting County Level Status Board', 'Summer Storm', 'Thu Aug 10, 2017 :: 09:46:31', 'Options', and 'Help'. The main content area is divided into three sections: 'County Overview', 'County Map View', and 'Twitter Feed'. The 'County Overview' section shows a list of tickets with columns for 'Ticket ID', 'Status', 'Priority', 'Kind', 'Status', 'Priority', and 'Request of'. The 'County Map View' section shows a map of Buffalo, NY, with a pop-up window for ticket #3298: 'Road closed at Main and Bailey'. The 'Twitter Feed' section shows several tweets from various sources, including 'LifeFacts', '#BuffaloInABox.com', 'Andrew Baglini', 'NWS Buffalo', 'NWS Buffalo', and 'Tim O'Brien'.

- Web-based, mobile friendly emergency management system that provides tools for shared situational awareness, workflow-based information management, and real-time communication
- Simplifies task, mission, and resource management with simple guided data entry tools
- User customizable dashboards, reports, and workflows
- Advanced GIS tools including drone flyover imagery options

INCIDENT MANAGEMENT SOLUTIONS

The screenshot displays the 'DisasterLAN IAP Builder' web application. The interface is titled 'Severe Thunderstorm' and shows a 'New Incident Action Plan' form. The form is divided into three main steps: Step One (Setup Incident Action Plan), Step Two (Edit Forms), and Step Three (Review & Publish). Step One includes fields for 'Define the Operational Period for this Incident Action Plan (IAP)', 'Define the Title of the IAP', and 'Define the Cover Page'. Step Two includes a table for 'Define the ICS Staffing for this Operational Period' with columns for Staff Positions, Operational Period Staff, and Prepared / Approved By. Step Three includes a list of ICS Forms to be included in the IAP, such as ICS 201 - Incident Briefing, ICS 202 - Organization Assignment List, ICS 203 - Assignment List, ICS 204 - Incident Communications Directory, ICS 205 - Operational Chart, ICS 206 - Incident Status Summary, ICS 207 - Incident Check-In List, ICS 214 - Activity Log, ICS 215A - Incident Action Plan Safety Analysis, ICS 215.1 - Hoist Card (Gray), ICS 215.3 - Flight Card (Blue), ICS 215.5 - Equipment Card (Yellow), ICS 215.6 - Miscellaneous Equipment/Task Force Card (Tan), ICS 215.10 - Genetic Card (Light Purple), ICS 221 - Demobilization Check-Out, ICS 202 - Incident Objectives, ICS 203A - Organization Assignment List Cont'd, ICS 206 - Incident Communications Plan, ICS 209 - Medical Plan, ICS 210 - Safety Message/Plan, ICS 211 - Resource Status Change, ICS 212 - Incident Message, ICS 213 - Operational Planning Worksheet, ICS 215 - Support Vehicle/Equipment Inventory, ICS 215.2 - Crew Team Card (Green), ICS 215.4 - Helicopter Card (Blue), ICS 215.5 - Personnel Card (White), ICS 215.6 - Hoist Card (Orange), ICS 220 - Air Operations Summary, and ICS 222 - Incident Personnel.

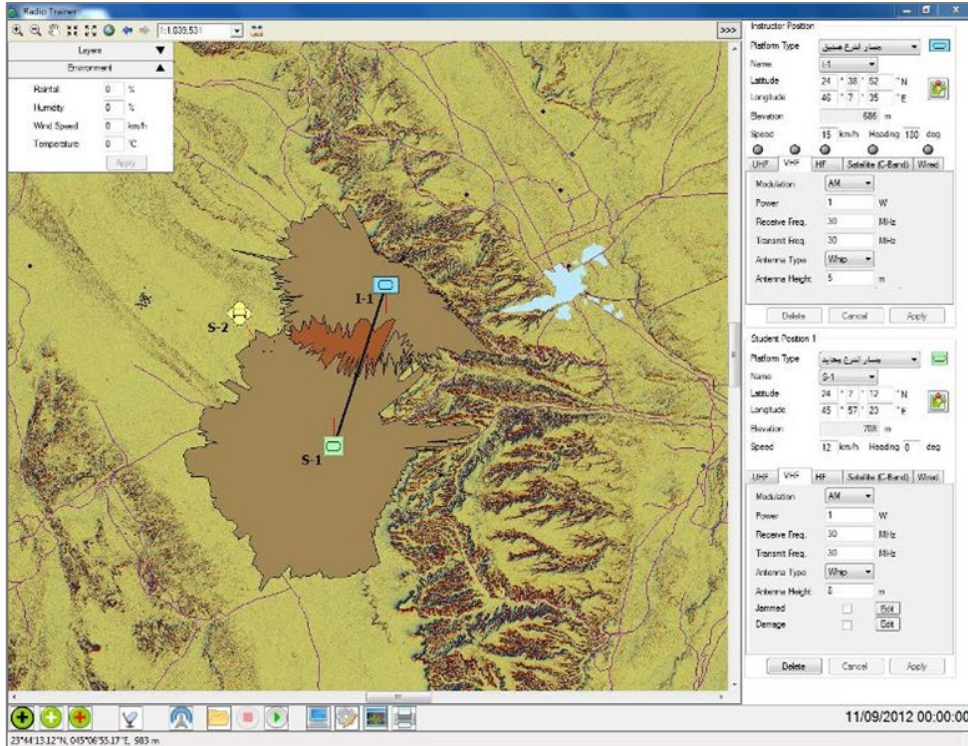
- Easy after-action reporting tools
- Scalable to include any number of concurrent users and partner organizations
- Follows NIMS, ICS, HICS, and IMS interoperability, terminology, and standards
- 24/7/365 activation support including Incident Management Assistance Teams (IMAT)

MASS NOTIFICATION



- ADA compliant
- Web-based
- Reverse 911/IPAWS capable
- iOS and Android apps
- Automated alerts:
 - Amber Alerts
 - Orders of Protection Alerts
 - Sex Offender Alerts
 - Weather Alerts
 - Transportation Alerts

CUSTOM ENGINEERING



- Contract hardware and software design, development, and manufacturing services
- Experience serving both private and public sectors, including the military
- Experience in all phases of project development
- Support services
- Consultation services



WHY CHOOSE BCG?

WHY CHOOSE BCG

- ✓ **Our Experience**

BCG's 37 years of experience and stability provides a basis for success and continual growth.

- ✓ **Our Products**

Across our divisions, we build commercial off-the-shelf and custom solutions that set the standard in their industries.

- ✓ **Our Team**

All of our engineering is done in-house by our experienced and talented team.

- ✓ **Our Service**

As a privately held company, BCG answers to customers, not stakeholders.

- ✓ **Our Approach**

We believe in making it easy for our customers to do business with us – that's why BCG maintains qualified vendor status on a variety of purchasing vehicles.





CURRENT CLIENTS & PARTNERS

MARITIME CLIENTS AND LARGE BUSINESS PARTNERS



Raytheon



GENERAL DYNAMICS
Information Technology



FURUNO U.S.A.

Raymarine



INCIDENT MANAGEMENT AND MASS NOTIFICATION CLIENTS



Our products are used internationally at all divisions of government and in the private sector. We have clients in multiple industries including:

- Emergency Management
- Healthcare
- Transportation
- Education
- Utilities
- Nuclear

INCIDENT MANAGEMENT PARTNERS



PARTNER CAPABILITIES

- Emergency Management Training
- Emergency Management Logistics Implementation
- Emergency Management Plan Design and Development
- Interstate - Intrastate Mutual Aid Planning
- Emergency Management Consulting Financial Risk Management
- Situational Awareness Critical Decision Support Service
- All Hazard Training Incident Management Support Team (IMST)
- Extreme Weather Services
- Location Management GPS Solutions for tracking, managing, and protecting fleets, people, and assets
- Inventory Management Solutions for rapid emergency deployment using GPS and RFID capability
- Remote monitoring and measurement of equipment function and utilization
- Tactical/HAZMAT Robots
- Quick deploy camera systems
- CommandLink on scene Tactical/Emergency Management Systems



CONTACT INFORMATION



Buffalo Computer Graphics, Inc.

4185 Bayview Road

Blasdell, NY 14219

716-822-8668

info@bcgeng.com

www.bcgeng.com

