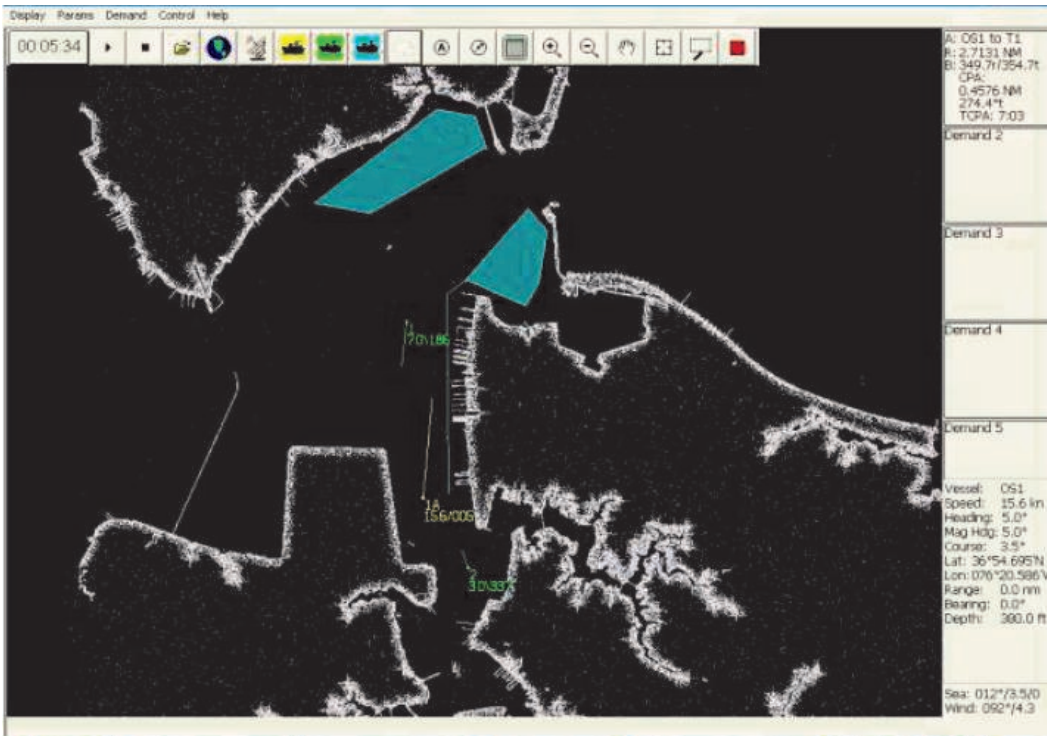


# Learning Management System (LMS) & Student Response Unit (SRU)



## Features

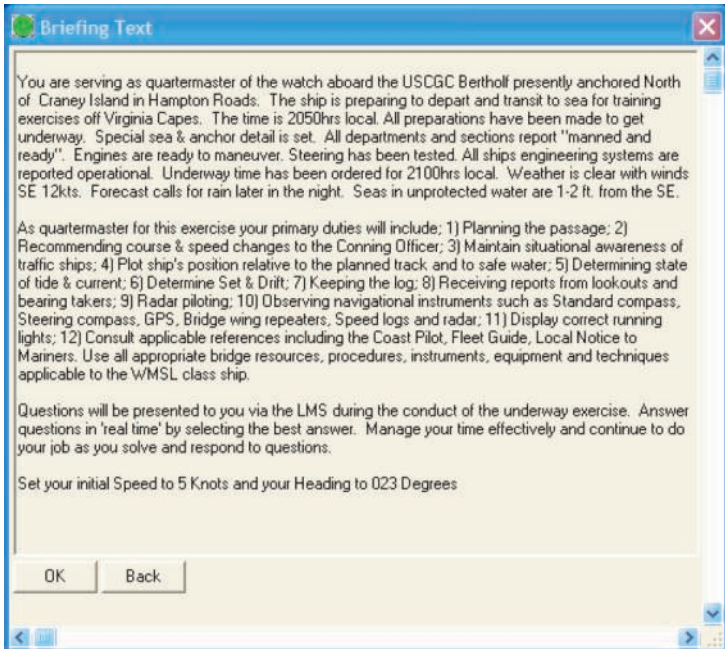
- > Briefing Text to provide students a description of the training scenario
- > Event Triggered Question and Answer Sets
- > Event Triggered Warning Messages
- > Reference Library accessible during scenario
- > Text to Voice Capability

Buffalo Computer Graphics (BCG) is pleased to offer the Learning Management System (LMS) as an accessory to our radar simulation product line. The LMS is a tool to enhance and automate the teaching process when operating BCG simulation.

The LMS combines custom instructor features integrated into BCG's Enhanced Graphical User Interface (GUI2) with a Student Response Unit (SRU) provided at each student learning position. The two modules are used as an on-line teaching aid to assist in the creation of intelligent lesson plans, briefing text, and event triggered messages within a training exercise. This includes instructor tools to highlight and designate sections of the exercise area which need to be avoided or require special attention during transit. These special training events may be programmed to take place automatically with the exercise, or be manually triggered by the instructor when they wish. Question and Answer sets can be programmed to appear during the scenario to test a student's knowledge at the point in the exercise which the information is most relevant. Question sets can be programmed to appear based on triggers established by the instructor or at the end of training. Upon completion, the LMS builds an evaluation report based upon instructor criteria and the actions taken by the student during training.

The SRU is networked to the LMS and placed with the student. This interactive terminal may be a desktop with monitor and mouse, a laptop or a tablet computer. The SRU provides an audible alert to the student when an action item occurs, then allows the student to respond using the SRU terminal interface. The SRU operates in real time and dynamically with the training exercise.

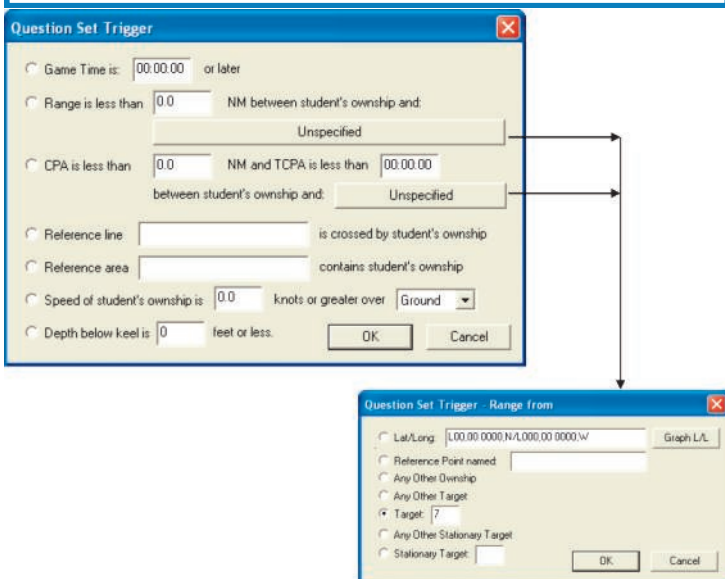
## Briefing Text Window



## Triggers:

The LMS allows for warning messages or question and answer sets to appear after certain trigger events set by the instructor. These triggers include:

- \* Game Time
- \* Reference Area
- \* Range
- \* Speed
- \* TCPA/CPA
- \* Depth
- \* Reference Line



## The Student's Experience

The LMS interacts with the user through a standalone workstation using a graphical interface and/or text-to-audio voice messaging referred to as a Student Response Unit (SRU). With all phases of the SRU controlled by the instructor, they determine the level of automated support which is integrated into the training scenario. The student is automatically presented with the lesson plans, warnings and question sets to supplement the use of visuals, radar, charts and/or voice communication used during training. All SRU interactions and Ownship maneuvers are recorded for later review.



## Reference Library

The reference library includes:

- ◇ Navigation Rules
- ◇ Bowditch's American Practical Navigator
- ◇ Applicable Radar Operator's Manuals
- ◇ BCG User Manuals for installed software
- ◇ Pub 1310, Radar Navigation and Maneuvering Board Manual
- ◇ And manuals saved by the user.

Contact BCG for information and pricing on our full line of Maritime Simulation products.