

# PC22x8

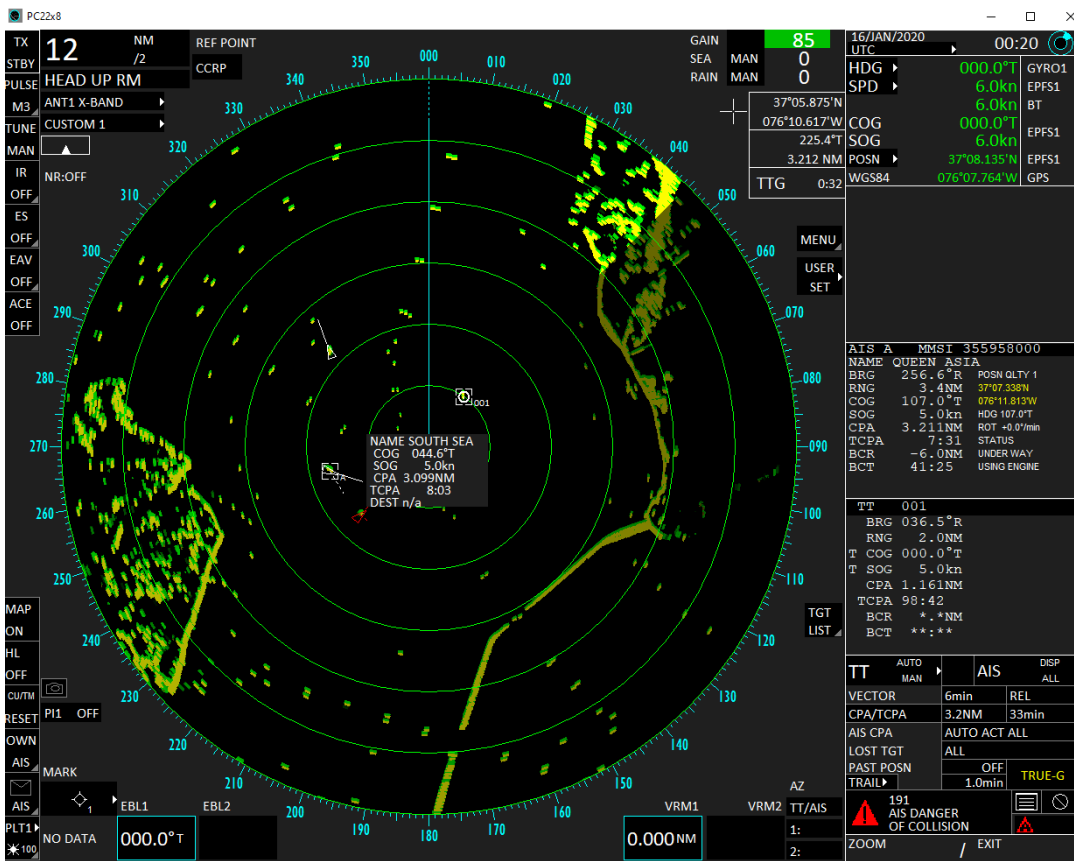
## FAR 22x8 Emulator



Buffalo Computer Graphics' newest radar emulation is PC22X8, based off of Furuno's FAR22x8 radar. PC22X8 joins a growing list of radar emulations that are offered by BCG and is compliant with international training standards for radar ARPA training. The PC22x8 user interface models the real FAR22x8 radar currently used by both military and commercial vessels as a surface search radar.

The operational features of the emulation include radar video controls, dual EBL & VRM, multiple presentation modes, graphics capabilities and range scaling. Our 3D radar imagery incorporates realistic simulation of landmass, moving targets, precipitation returns, sea clutter, and other effects seen on a real radar display. For ARPA support, PC22X8 provides target acquisition & tracking, leading vectors & history trails, trial maneuvers, and navigation marks.

PC22x8 was developed using BCG's standard radar simulation engine, is compatible with our Maritime Simulation Tool (MaST), and can be controlled by another simulation engine through a simple network interface. PC22x8 is available in a software only package ready for installation on a customer's PC, or BCG also offers "turn key" systems packaged in multiple configurations depending on your needs.



### Features

- > Windows-based radar emulation software
- > Simulates user interface of the Furuno FAR22x8 Radar
- > Target Track Message Output for ECDIS integration
- > User Interface operates from Trackball or Mouse or real Control Panel
- > Target Tracking features including acquisition zones and guard zones
- > Supports AIS Features
- > Simulates ACE (Automatic Clutter Elimination)
- > Instant popup window displaying information about track near cursor
- > Can be configured for fast acquiring of targets

## PC22x8 SCREEN IMAGES

TT	006	007
BRG	035.8°R	107.1°R
RNG	5.3NM	5.6NM
T COG	000.0°T	000.0°T
T SOG	0.0kn	0.0kn
CPA	3.088NM	5.690NM
TCPA	43:27	-17:06
BCR	*.*NM	*.*NM
BCT	**:*	**:*

AIS A	MMSI	355958000
NAME	QUEEN ASIA	
BRG	195.9°R	POSN QLTY 1
RNG	4.2NM	37°06.710'N
COG	107.0°T	076°09.249'W
SOG	5.0kn	HDG 107.0°T
CPA	4.159NM	ROT +0.0°/min
TCPA	-18:27	STATUS
BCR	-5.7NM	UNDER WAY
BCT	13:55	USING ENGINE

TT	001	005
BRG	042.6°R	231.4°R
RNG	1.6NM	7.8NM
T COG	000.0°T	000.0°T
T SOG	5.0kn	0.0kn
CPA	1.105NM	7.752NM
TCPA	74:41	-50:32
BCR	*.*NM	*.*NM
BCT	**:*	**:*

Target Information Panel

AIS (1/2)	
1	BACK
2	SLEEP ALL TARGETS NO/YES
3	AUTO DISP MESSAGE OFF/ON
4	SHOW RECEIVED MSGS
5	TRANSMIT MESSAGE
6	VOYAGE DATA
7	OWN SHIP DATA
8	AIS ALERT MESSAGES
9	CPA AUTO ACTIVATE
0	NEXT
MAX RANGE	
	OFF 0NM
	MIN SHIP SPEED
	OFF 1.0kn
EXCEPT BASE STATION	
	OFF
EXCEPT PHYSICAL ATON	
	OFF
EXCEPT VIRTUAL ATON	
	OFF

Example of Menu Panel

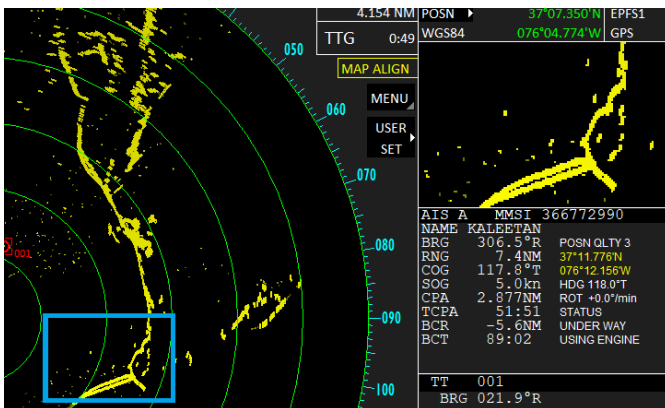
## Actual Radar Attributes:

The PC22x8 supports the primary operating features and modes of the real radar display. These include:

- ◆ STC, FTC, and Gain Control
- ◆ Heads Up, Course Up, North Up Displays
- ◆ Two Variable Range Markers (VRMs)
- ◆ Two Electronic Bearing Lines (EBLs)
- ◆ Target Acquisition and Tracking
- ◆ Auto Acquisition and Guard Zones
- ◆ Ownship and Target Data Windows
- ◆ Radar Image Offset
- ◆ System Alerts
- ◆ Track Histories
- ◆ True or Relative Vectors
- ◆ Navigation Marks
- ◆ Trial Maneuvers (Static or Dynamic)

## PC Requirements:

- ◆ Windows WIN7, WIN8 or WIN10
- ◆ Multi-core processor, >2GHz
- ◆ 8GB memory
- ◆ 500MB disk
- ◆ 100/1000 NIC
- ◆ USB for Keyboard & Mouse



Zoom Display Panel magnifies the boxed area

## Specific PC22x8 Features:

- ◆ Instant Access buttons along left edge of window
- ◆ Panel display of information for up to 6 tracks and/or 3 AIS targets
- ◆ Parallel Index Lines
- ◆ Interference Rejection, Echo Stretching, Echo Averaging, Wiper and ACE support.
- ◆ Programmable Color Modes, including trail color
- ◆ Zoom Function to magnify a section of radar display
- ◆ AIS Navigation Symbols for ATON (real or virtual), SAR units, or Base Stations
- ◆ AIS Text messages can be sent between instructor and student in both directions.
- ◆ Menu Panel access for display control
- ◆ Depth histogram and graphic wind data display

BCG also offers PC-based radar emulations for several other radars. All of our emulators provide the same level of radar fidelity as the PC22x8, as well as the full ARPA and AIS capabilities.

Contact BCG for information and pricing on our full line of Maritime Simulation products.